

# Disk Light Series

D236D-90-CCT

## DESCRIPTION

A flexible, low cost downlight solution for new construction and recessed can LED retrofit applications. It can be installed virtually anywhere, provides true color rendering with 90+ CRI, and can be continuously dimmed to 10% with standard dimmers. Ideal for healthcare, property management, hospitality, residential, office, retail, etc.

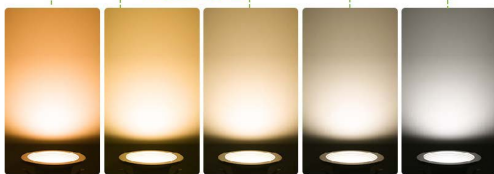


## TECHNICAL SPECIFICATION

MODEL#	D236D-90-CCT
WATTAGE	15W
LUMENS	1100lms
VOLTAGE	120V
POWER FREQUENCY	60Hz
POWER FACTOR	>0.9
5CCT	2700K   3000K   3500K   4000K   5000K
CRI	90
BEAM ANGLE	90°
LIFESPAN	≥50,000hours
DIMMING	Triac Dimming
RATING	Suitable for wet locations
WARRANTY	5 years limited



## COLOR TEMPERATURE CONTRAST



2700k Soft white    3000k Warm white    3500k Warm white    4000k Cool white    5000k Daylight

## FEATURES

- Low profile, driverless design
- Continuous dimming from 10%-100% with many Triac dimmers
- Surface mounts to a standard 6" junction box
- Retrofit into an existing recessed can

## DIMMABLE

Compatible with most LED dimmers to give you a smooth, 100%-10% dimming experience, so you can choose the right brightness for you. Please check the dimmer list for compatible models of dimmers!

### Compatible dimmers for surface down light

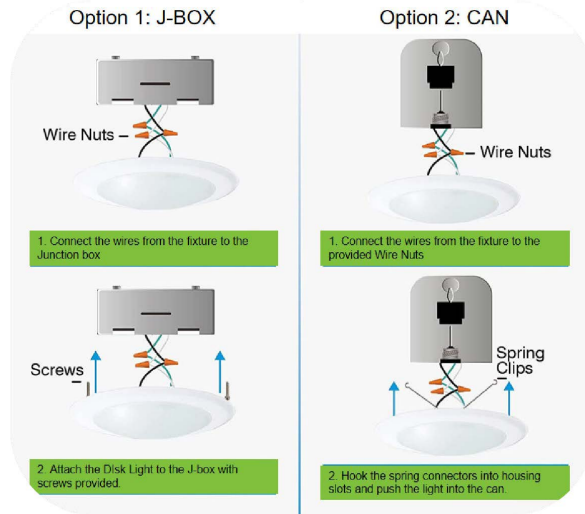
Brand	Lutron	Leviton
Model	DVWCL-153PH-LA	6674
	CTCL-153PR-WH	6633-P
	CTCL-150H-WH	6672
	DVW-603PGH-WH	IPL06
	DVLV-603P-IV	
	DVCL-163P-WH	
	CT-600PR-WH	
	CT-103PR-WH	
	CT-603PGH-WH	
	CT-600PR-WH	
	SLV-600P-WH	
	S-600P	
	S-603P	
	NT-1000	
	S-600PR-WH	
	DV-600P	

## LISTING

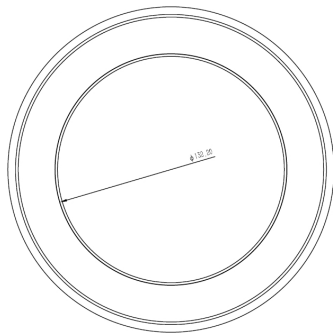
ETL Listed. Energy Star.



## Accessories & Installation



## Size & Dimension



Size			
6inch	7.28"(185mm)	0.87"(22mm)	

