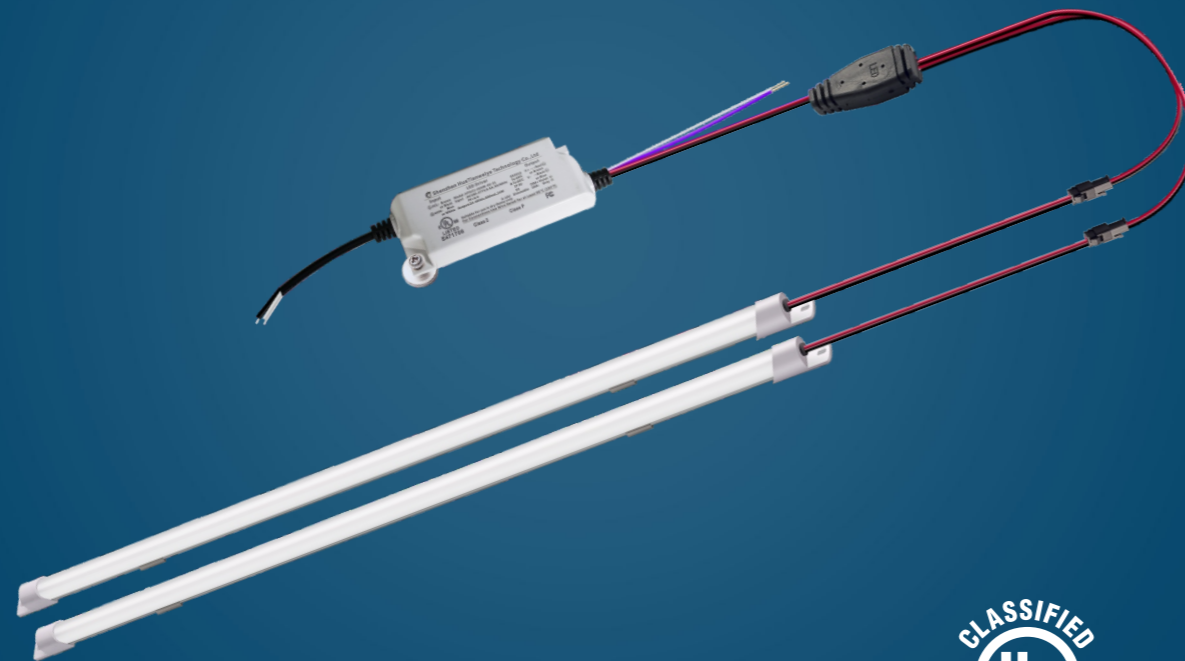


Magnetic led retrofit strip kit

0-10V Dimming



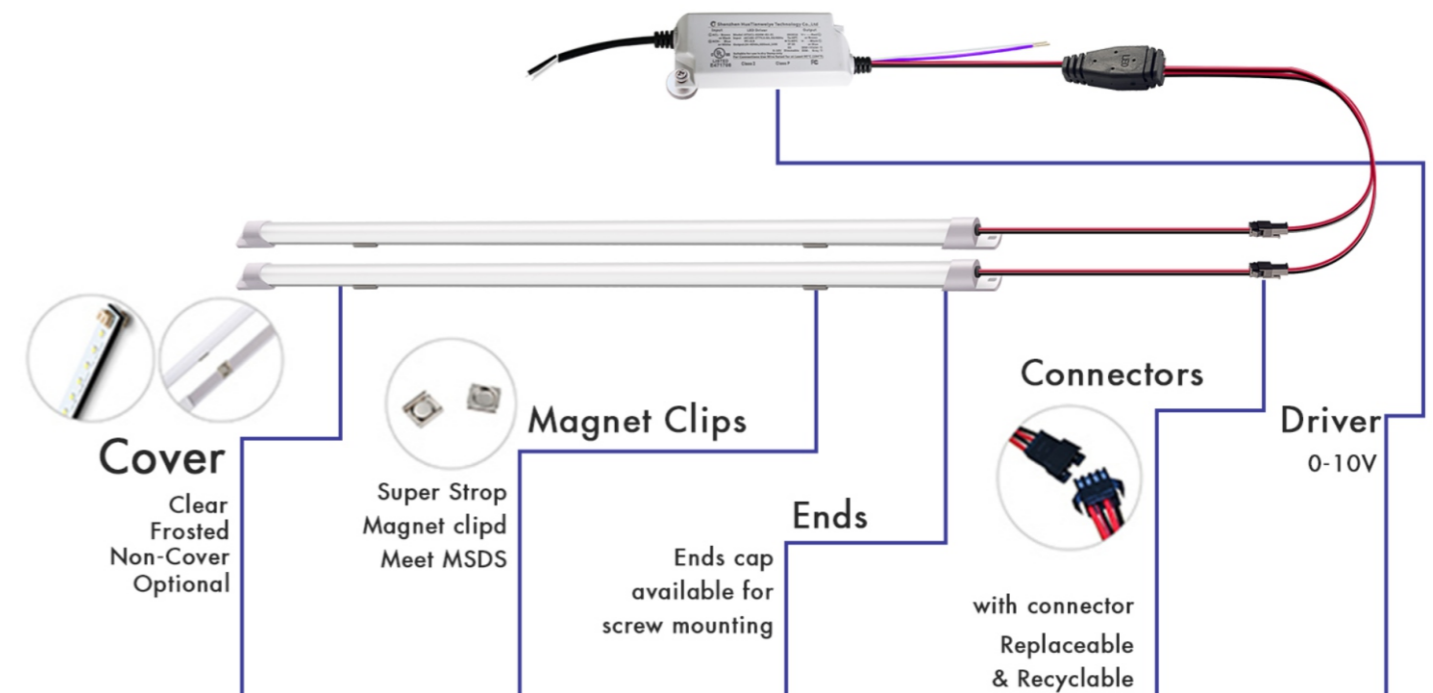
- Input at AC 100-277V.
- 3000K, 3500K, 4000K, 4500K, 5000K CCT.
- 150lm/w without cover or 140lm/w with cover.
- External driver from 9w to 72w.
- Dimming optional.
- Magnet adhesive, and installation hole on both end.
- Five years warranty

Parameter

Model	Power	Luminous Efficacy	Light Source	Operation Temp.	CCT	CRI	Life Span
ARK/DT/8K**D106(13D)	8W(8W x 1pcs)	> 140lm/w	SMD LED	-40to+45°C	3000K 3500K 4000K 4500K 5000K	80	50,000 hours at 25°C
ARK/DT/16K**D206(13D)	16W(8W x 2pcs)						
ARK/DT/24K**D306(13D)	24W(8W x 3pcs)						
ARK/DT/32K**D406(13D)	32W(8W x 4pcs)						
ARK/DT/12K**D112(13D)	12W(12W x 1pcs)						
ARK/DT/24K**D212(13D)	24W(12W x 2pcs)						
ARK/DT/36K**D312(13D)	36W(12W x 3pcs)						
ARK/DT/48K**D312(13D)	48W(12W x 4pcs)						
ARK/DT/18K**D112(13D)	18W(18W x 1pcs)						
ARK/DT/36K**D212(13D)	36W(18W x 2pcs)						
ARK/DT/54K**D312(13D)	54W(18W x 3pcs)						

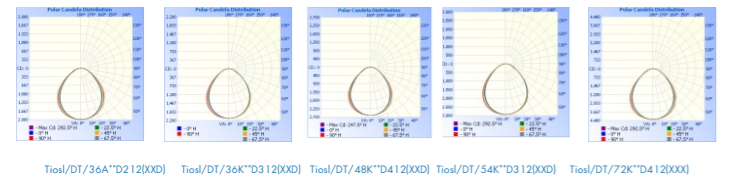
Voltage	Driver	Emergency Module	Dimming	PF	Beam Angle	Warranty	Certification
100-277VAC 50-60HZ	UL listed power supply	Available	0-10V	>0.95	120°	5 year	UL,DLC

Structures

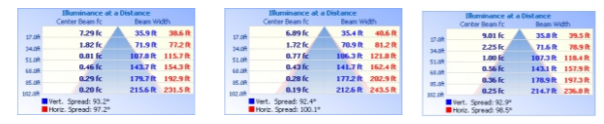


Photometrics

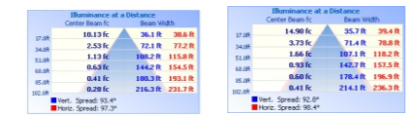
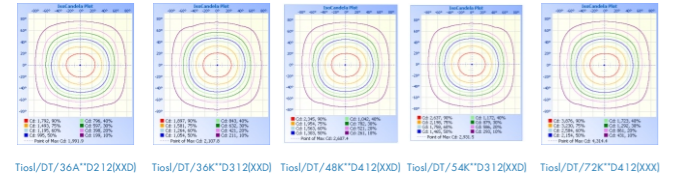
Polar Candela Distribution



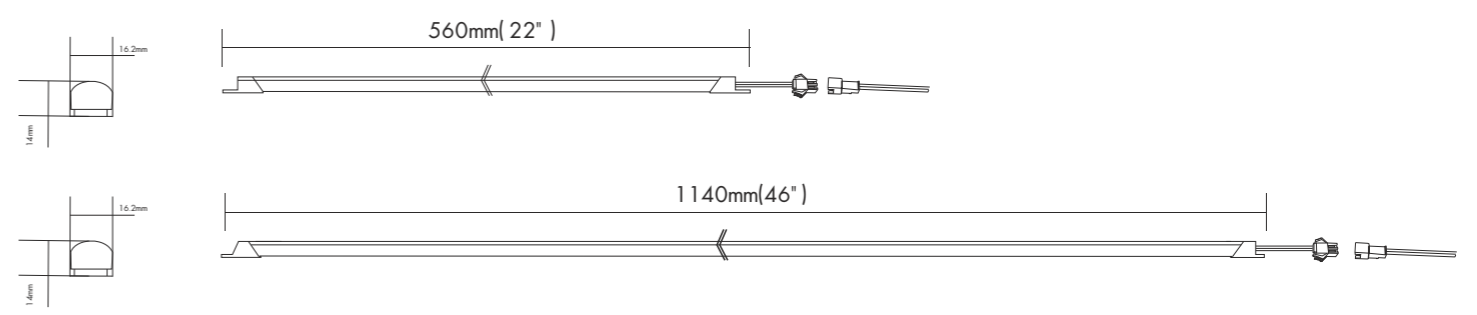
Illuminance at a Distance



IsoCandela Polt

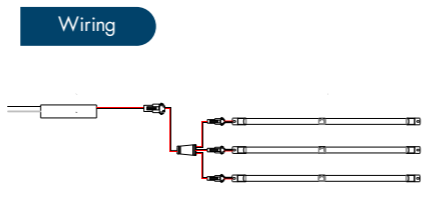
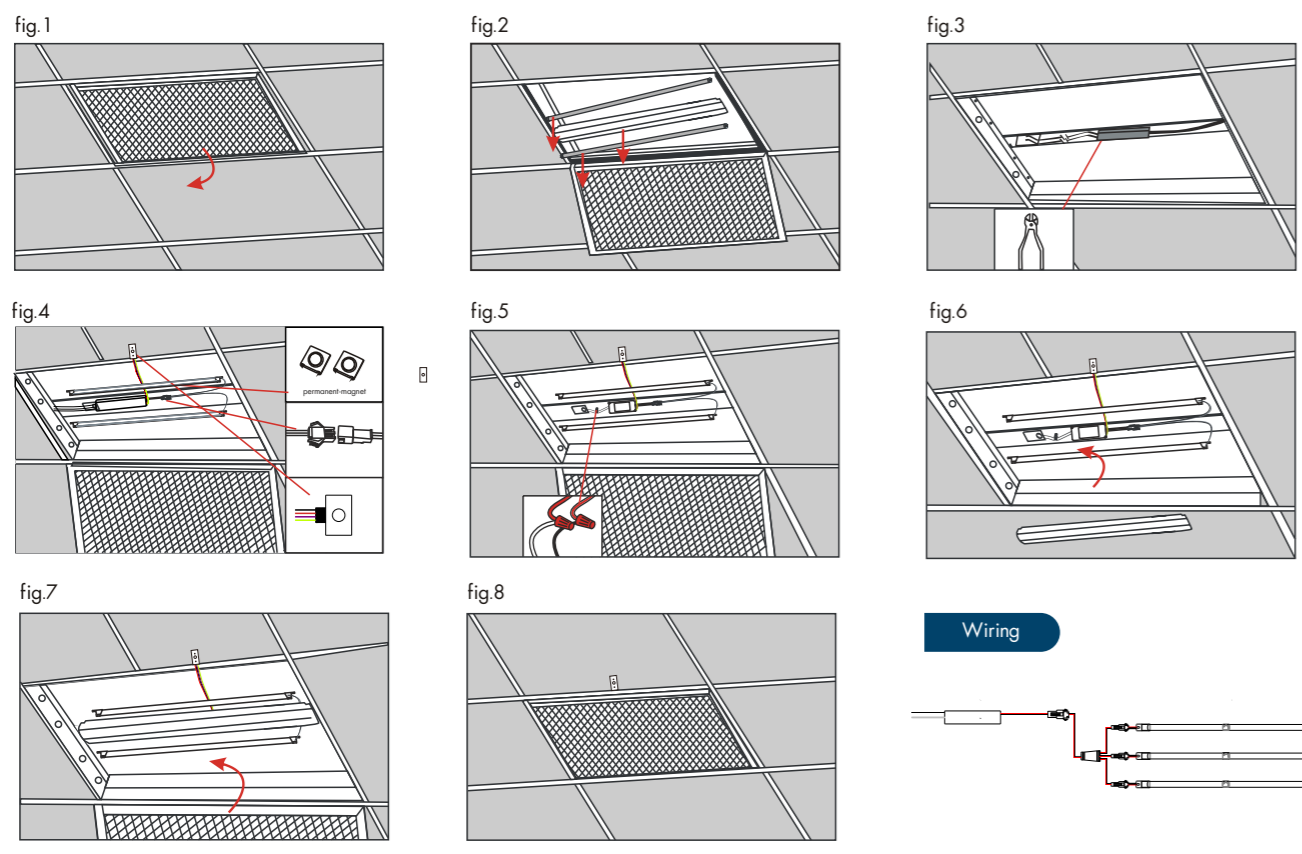


Dimensional Drawing



Installation

1. Open the old Fixture's Cover.
2. Take out Tubes and Reflector (if any).
3. Take out the ballast Insulated or capped all unused conductors with wire connectors.
4. Install Tiosl Magneticstrips (must be secured by screws) ##.
5. Install drivers by screws to where the ballast removed and rewiring.
6. Install the Reflector(if any).
7. Close the Cover.
8. Turn on the light.

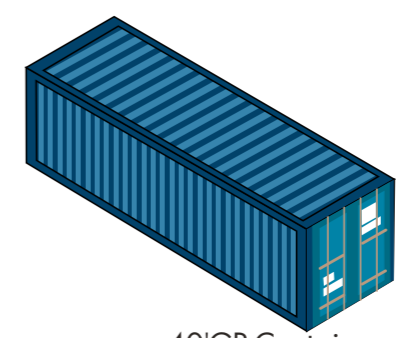


Package

Unit:mm	Q'ty/CTN	L(mm)	W(mm)	H(mm)	NW(KG)	G.W(KG)
2'x2' LED Tube	100	650	300	275	4.5	5.5
2'x4' LED Tube	100	1255	300	275	8.6	9.5
Drive	30	3520	305	108	7.5	8.5



Container Loading



20'GP Container

40'GP Container

40'HP Container

2'x2' LED Tube	Loading QTY	2'x4' LED Tube	Loading QTY
1x1 tube	21000 PCS	1x1 tube	12600 PCS
1x2 tube	25200 PCS	1x2 tube	14400 PCS
1x3 tube	25200 PCS	1x3 tube	14400 PCS
1x4 tube	12600 PCS	1x4 tube	14400 PCS

2'x2' LED Tube	Loading QTY	2'x4' LED Tube	Loading QTY
1x1 tube	42000 PCS	1x1 tube	29400 PCS
1x2 tube	46200 PCS	1x2 tube	31200 PCS
1x3 tube	46200 PCS	1x3 tube	33600 PCS
1x4 tube	50400 PCS	1x4 tube	33600 PCS

2'x2' LED Tube	Loading QTY	2'x4' LED Tube	Loading QTY
1x1 tube	42000 PCS	1x1 tube	29400 PCS
1x2 tube	46200 PCS	1x2 tube	31200 PCS
1x3 tube	46200 PCS	1x3 tube	33600 PCS
1x4 tube	58800 PCS	1x4 tube	31800 PCS